

Ruby 125 – IMPA 591601 – PTFE Diaphragms

Construction materials: **ALUMINIUM**

New pump line with a brand-new design that offers reinforced pumping potentials. The updated design provides an even bigger performance provided with the economy.



EAC CE



II 2/2 G/D Ex h IIC T4 Gb/Db
I M2 Ex h Mb

5 YEARS
LIMITED
WARRANTY



Benefits

- Optimal performance
- Economical air consumption, ecological design
- High efficiency for pressure/capacity
- Oil free operation
- No freezing
- New air valve design, fully controlled air passing
- Easy disassembling and re-assembling
- New generation diaphragms with embodied inner-outer piston
- New generation PTFE diaphragms of embodied type for long-life operation (compound)
- Advanced quality Full capacity PTFE-A diaphragms for high chemical and mechanical applications
- Potential to be submersible (on request)
- Possibility to be used in dirty environments due to their closed designing
- Easy manifold reverse
- Automatic suction
- Twin manifold option (two suction and two delivery)
- Excellent performance and value for money
- Ideal for abrasive, viscous, and shear sensitive media

Ruby Innovative oil free air valve

The heart of the Ruby pump is our innovative, new design air valve. In respect to New Era demands, to create and offer High Quality product, with high interest for the environment and it's protection, the Air Valve of the Ruby Diaphragm Pumps has been created to offer:

- a Oil free operation
- a Low need for maintenance
- a Not affected by minor contamination of compressed air
- a Significant energy saving
- a Non freezing operation
- a External environment operation
- a No dead centre
- a Long life
- a Reliability



Advance unified diaphragms featuring:

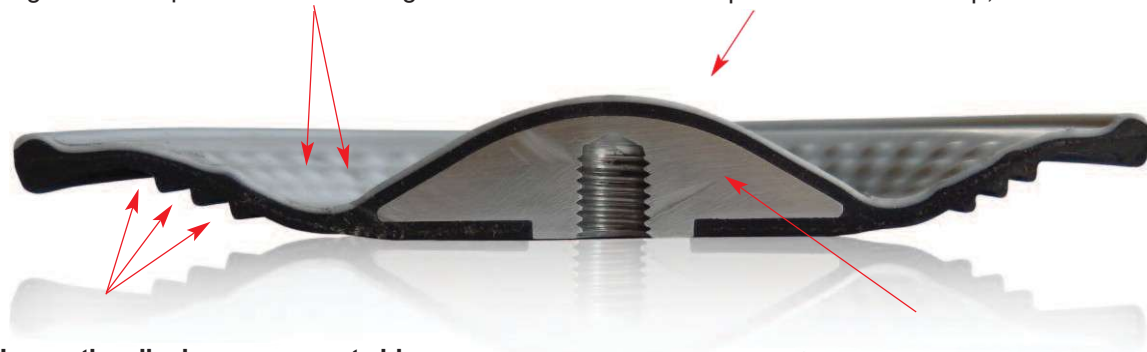
- a Easy installation and maintenance
- a Excellent service life
- a Inventory cost reduction
- a Improved performance
- a Greater displacement per cycle
- a No center hole, elimination of potential leak paths.
- a There is no need for the main axis to be insured
- a They can be screwed and unscrewed without the use of tools



Advance Unified Diaphragm offers:

The prominences decrease the stretching of the PTFE during the regression and prevent it from cracking.


Innovative conical shape ideal for optimal performance and life, low pressure requirements for start-up, ideal suction



Innovative diaphragm support side, offers flexibility, long life and protects from cavitation

Special internal plate supports your diaphragm in every movement

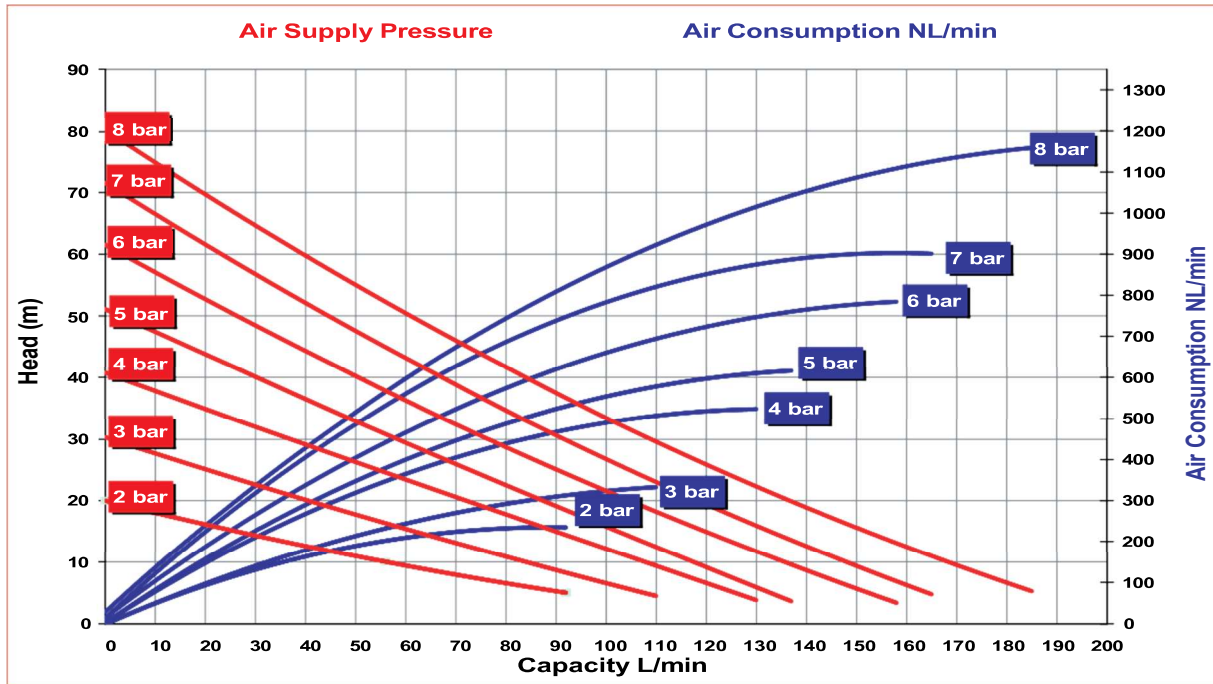
Technical data

ATEX Certification	 STANDARD : II 3/3 G/D Ex h IIB T4 Gc/Dc CONDUCT : II 2/2 G/D Ex h IIC T4 Gb/Db – I M2 Ex h Mb
Construction Material	Aluminum AL-233
Diaphragms	T: Compound PTFE+Back up EPDM Conductive
Intake/delivery connections	1" BSP G - DN 25 Flange PN16 / ANSI / JIS on request
Air connection	1/2"
*Max. flow rate	185 L/min
*Max. flow pressure	8 bar
Operating pressure	Min. 2 bar - Max.8 bar
Max. suction head	5 m
Max. size of solids	3.5 mm
Max. operating Temperature	95°C
Weight Aluminum	8Kg

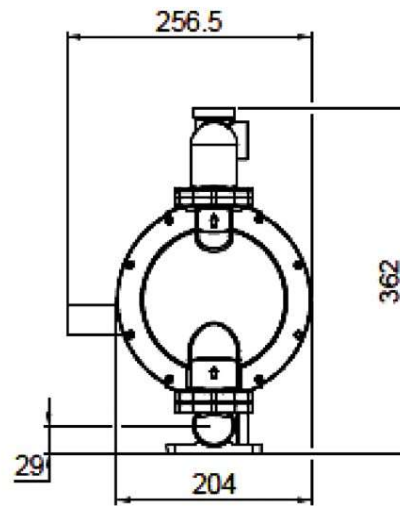
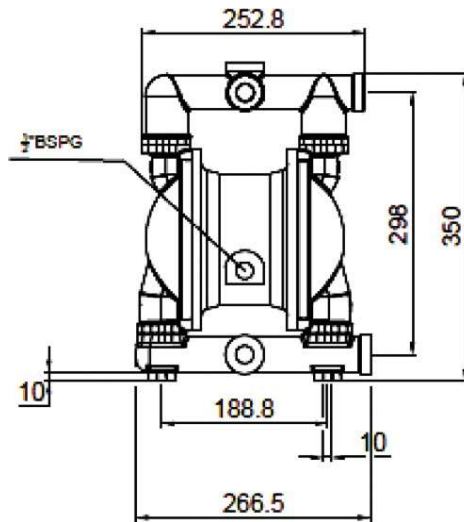
* The curves and performance values refer to pumps with submerged suction and a free delivery outlet with water at 20°C and vary according to the construction material.

Performance

RUBY 125 - FULL CAPACITY PTFE - A FITTED



Dimensions Ruby 125





We Make The Difference

Production Plant - Greece
Inofita Industrial area
59th km Nat.Road Athens- Lamia
GR 320 11 Inofita Viotia, Greece
Tel +30 215 215 9520 , +30 215 215 9580
Email: Sales@alphadynamic.eu
www.alphadynamic.eu



PILOT MARINE SUPPLIES
V. KAVOUSSANAKIS - D. TZEKOS O.E.
2Argirokastrou str. 18233, RENTIS
Tel: 210 4226591 , Fax: 210 4226594
E-mail : info@pilotms.com
www.pilotms.com